



Personnel Accountability and Assessment System Overview

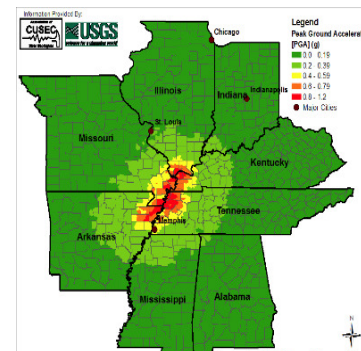
COMPANY CONFIDENTIAL: This document contains proprietary information and intellectual property of Cognetic Technologies. Neither this document nor any of the information contained herein may be reproduced without prior written permission.

Cognetic's Background in Personnel Accountability

- Key originators, designers and developers of the current DoD PA solution—Personnel Accountability and Assessment System (PAAS)
 - Starting with Task Force Navy Family after Hurricane Katrina in 2005
 - Current customers: Army, Navy, Air Force, 23 DoD Agencies, USCG, VA, COCOMs, Army Reserve Family Programs
 - **7M+** daily users
 - Integration with AtHoc IWSAlerts
- Software Environment
 - Back-end: MS SQL Server
 - Front-end: Java App, Tomcat Server
 - Hosted on VM servers at customer site



- Account for people
 - Consolidate responses from all devices
 - Account for others, by organization and role
- Monitor statuses
 - Statuses by event, org, person, etc.
 - Trigger messages based on event criteria
- Assist people during recovery
 - Needs assessments
 - Collaborative support
- Value-added Features
 - Multiple, coordinated alerts and notifications promote dialogue with users in context of events



- Disaster Event Management – ID populations of users
- Disaster Accountability – multiple device self-reporting
- Disaster Assessment – needs-based self-assessment
- Disaster Case Management – collaborative assistance to those with needs
- Daily Accountability – daily personnel check-in
- Exceptional Family Member (EFM) Case Management – full workflow support for all EFMs
- Army Reserve Family Program – contact, case, and event data collection and metric reporting

- *AtHoc IWSAlertstm* alerting integration in 2012
 - Alert launching and reporting in PAAS via API
 - Alert controls managed in PAAS via API
- Multiple points of collection
 - Web, phone, text, email and other user device statuses fully integrated in PAAS
- Enhanced performance
 - Statuses are drawn from end-users through multiple devices
 - Results in significantly faster accountability



IWSAlerts is a trademark of AtHoc, Inc.

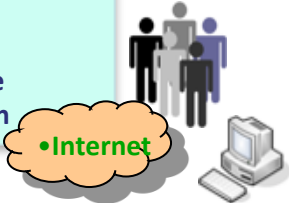
- **User Management – Organization-oriented**
 - Person-centered
 - Multiple, related taxonomies
 - Roles and responsibilities integrated
- **Event Management – Status-oriented**
 - Relational
 - Contextual
 - Stateful
- **Speed to accountability through device alerting**
- **Accurate and reliable business intelligence**

PAAS Key Strength is “Command and Control”



Sponsors/Families

- Respond to Alerts
- OR Go to PAAS web site
- Report status & location



- ACCOUNTING STATUS EXAMPLES :**
1. Safe and not Displaced
 2. Safe and Displaced
 3. Not Safe and Not Displaced
 4. Not Safe and Displaced
 5. Not Present in Geographical Area



Determine Geo Area

Email, text, phone Notifications

Units

- Go to PAAS web site
- Account for personnel
- View reports



Leadership Gives "Order to Account"



PAAS Operators

- Identify Affected Personnel
- Personnel Flagged to Account
- Event Created
- Alert Created



Personnel Accountability Reports

- Provided through PAAS web site
- Command-level, District-level, Unit-level



PAAS Events

Create Event

Select Geographic or Organization boundaries

Population Manager
New (unsaved) [Preview] [D/L Roster] [Save]

Description
Enter description here...

Included Population

Designations	Sponsors
Active Duty/FTS	<input type="checkbox"/>
SELRES/DRILLING RESERVES	<input type="checkbox"/>
RESERVE PERSONNEL (AT/ADT/ADSW/MOB)	<input type="checkbox"/>
Employee	<input type="checkbox"/>
Contractor	<input type="checkbox"/>
Other	<input type="checkbox"/>
CONUS Co	<input type="checkbox"/>
Retired/Se	<input type="checkbox"/>

GAOI Parameters

Countries (0) [Add] [Filter]

- U.S. States/Ter. (0)
- U.S. Counties (0)
- ZIP Codes (0)
- Dept IDs (0)

Preview population metrics

Select Personnel Categories to be included in Population

PAAS Alerts

Create Alerts

Alert Manager

Publish Alert

New Alert

Alert Publisher

Publish Alert

Alert Management

Alert Admin

Targeting

Targeting Group Associated With Existing Event's Population

Select Event:

Notify: Unreported Personnel Support Users of Unreported Perso

Devices

Email

Work Email Alternate Email

Text

Mobile Phone

Phone

Home Phone Work Phone Mobile Phone

[Show Phone Options](#)

Content

Alert Title or Email Subject:

Select an Active Event and Target Audience

Select Devices

Alert content is viewable

PAAS Accountability

Home CC Dept ID Admin Personnel **Accounting** Reports Reference My Info Upload Help Admin Sys Admin

Find person

TestAlert LA-LB

Include Hierarchy

[Accounting Status Definitions](#)

Family Records Per Page: 50

Total Family Records: 3

 Page 1 of 1

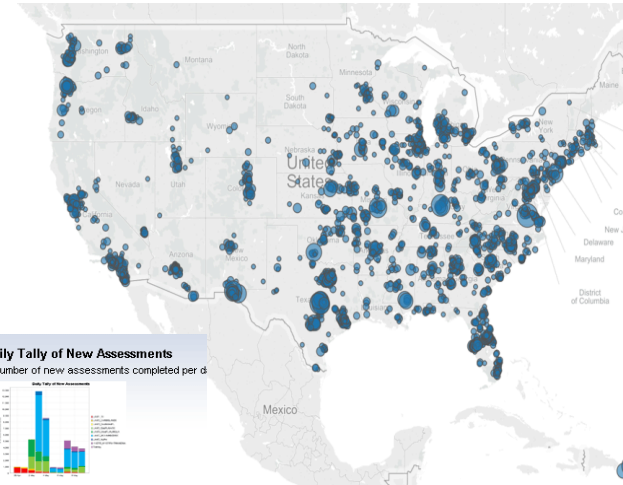
Name	Added to Event (Mouse-over for reason)	Dept ID	Clear	Accounting Options	Notes	Last Accounted By
DOE, JOHN	Added	CCCCC	Reset	Safe and Displaced		SYSTEM, AWS (No Dept ID) 2013-02-06 17:37 PST
Jennings, Michael	Added	CCCCC	Reset	Not Present in Geographical Area of Event - Other		Jennings, Michael (CCCCC) 2013-02-07 09:17 PST
LINDELL, LION C	Added	CCCCC	Reset	Unreported		
Lindell, Tiger M			Family Member not required to Account			<input type="button" value="Require to Account"/>

Set Status

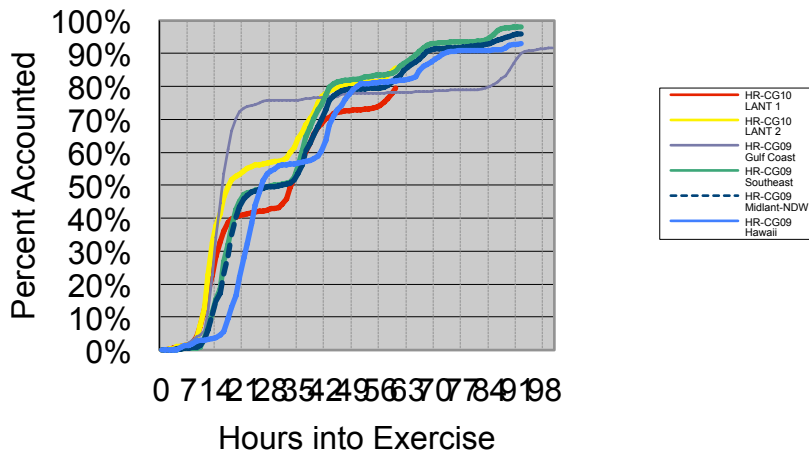
PAAS Reports

▼ Reports Include:

- Organizational unit status for an event
- Department level status for an event
- Individual employee details and history
- Historical and archived data



HR-CG09/10 PA Performance Comparison



General Statistics Reports

Affected NFMs, Assessments, and Cases by Event

Event	# Affected NFMs	# Assessments	# Cases
LANT1	1200	200	150
LANT1_CANNONBALL	120	18	18
LANT1_CANNONBALL2	100	100	100
LANT1_CANNONBALL3	100	100	100

- ▶ General Statistics by Event
- ▶ General Statistics by UIC and Event (CSV only)

Daily Tally of New Assessments

Number of new assessments completed per day



- ▶ Daily Tally of New Assessments

Case Status Reports

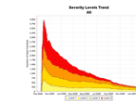
Resolved or reduced issues by category

Issue Category	Total	Open	Resolved
Medical	1400	0	1400
Personnel Training	4000	0	4000
Resource Planning	2000	2	1998
Local Transportation	10	0	10

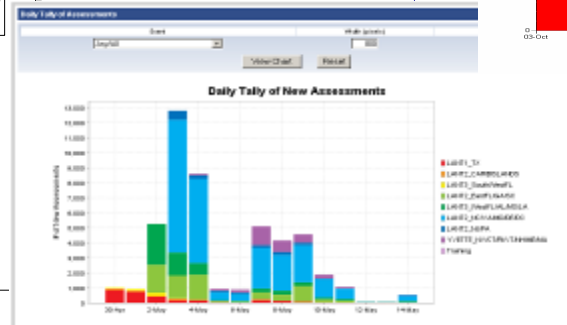
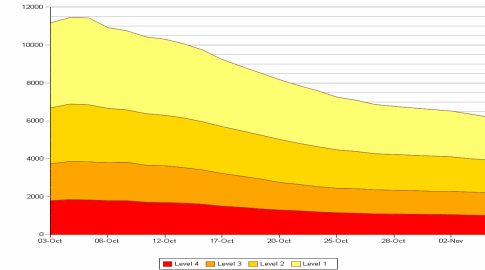
- ▶ Actions Taken Summary (1-4)
- ▶ Actions Taken Summary (3-4)

Severity Levels Trend

Total counts of severity levels (Choose from various categories)



- ▶ Severity Levels Trend



Other PAAS Capabilities

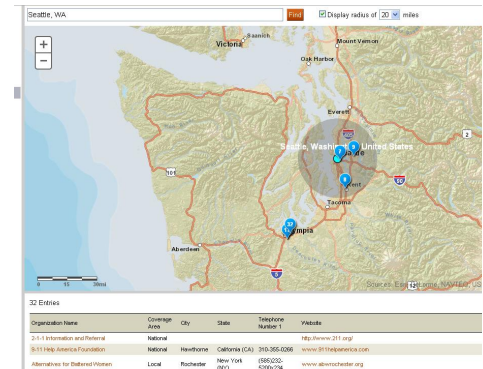
- Mobile phone apps

- Ability to respond via smart phone
- Ability to report in via smart phone



- GIS Mapping Overlays

- Interactive visualization similar to Google earth
- Supports command center and executive-level reporting



- Other System Integrations

- Expanded Evacuation module and integration with NEO-tracking
- Temporary location (TDY/TAD/Leave) information



PAAS Advantages...

- 100% Accountability
- Speed to Accountability
 - Intelligent Notification
 - Web Based Access
 - Everyone working in parallel
- Integrated Reporting
 - Real time visibility immediately after accounting starts
 - Capture other information used for granular reporting
- Reduces Resources
 - Fewer people required to get the job done accurately

Any questions about our capabilities and services, please contact:

Mike Jennings, President & CEO

mike.jennings@cognetictech.com

(619) 806-8117

www.cognetictech.com